

MODERN DATA ARCHITECTURE

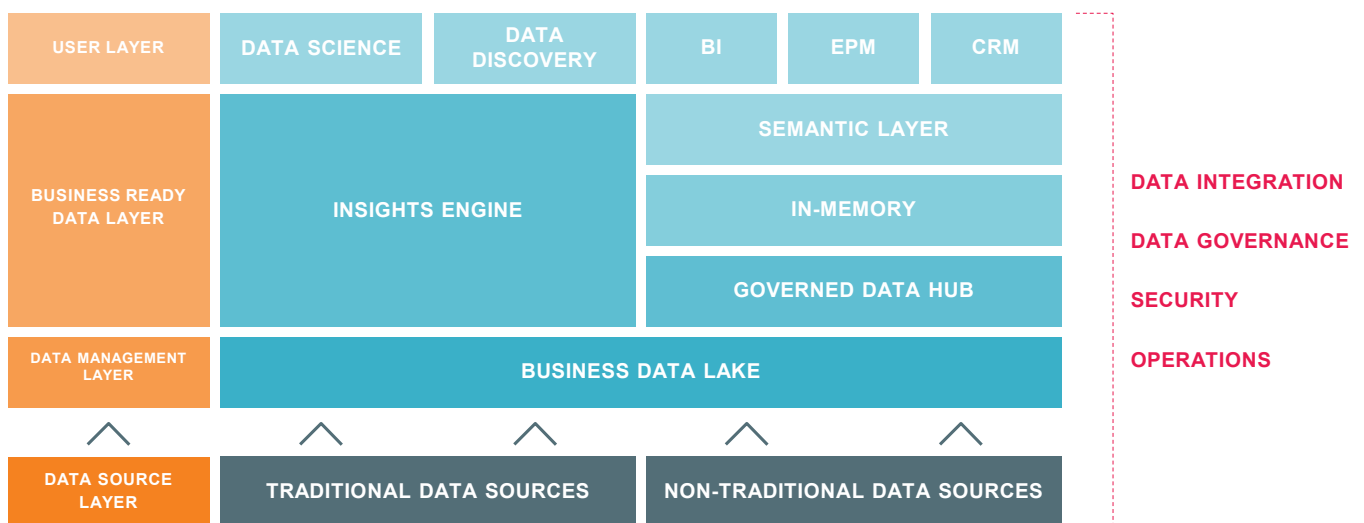
DATA PLUMBING IS THE NEW BLACK

CHANGE THE GAME WITH THE NEXT GENERATION DATA ARCHITECTURE

You're hamstrung by legacy technologies and costly, time-consuming approaches that are stalling innovation and eroding competitive advantage. If you don't evolve to meet data consumer needs you will become obsolete. Change the game with the next generation data architecture.

MODERN DATA ARCHITECTURE EXPLAINED

A modern data architecture turns data into a valuable asset and arms your business consumers with insights from across the data supply chain. It provides a framework for consolidating and processing multiple data sources, including internal and external data, traditional and non-traditional data and structured and unstructured data. A modern data architecture connects your data and eases the process of data movement across a variety of platforms such as data warehouses and data lakes. It then governs and integrates that data, optimizes it and prepares it for business use and analysis.



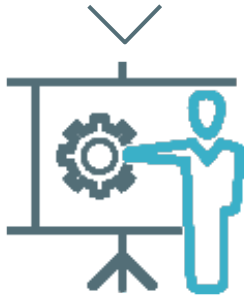
A conceptual view of MDA

CERVELLO DIFFERENCE

Cervello is comprised of experts focused on data innovation. Our modern data architecture solutions manage data complexity and deliver value to enterprise-wide data consumers far faster and less expensively than traditional methods. We empower IT leaders to push the envelope of innovation fusing modern data technologies and platforms with methods to provide our clients with an unfair advantage, right out of the gate.

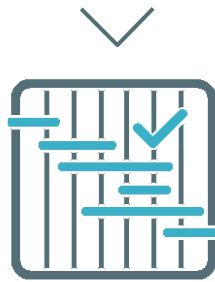
MDA GETTING STARTED PROGRAM

ENVISION



- discovery workshop

ENVISION+



- readiness assessment
- execution roadmap
- proof of concept

IMPLEMENTATION



- solution delivery
- innovation labs

EXPERTS ACROSS A VARIETY OF PLATFORMS & TECHNOLOGIES

CUSTOM DEVELOPMENT

Enterprise Performance Management

anaplan hostanalytics ORACLE

Business Intelligence & Analytics

DB birst looker rapidminer R
salesforce wave analytics + a b l e a u spark ORACLE

Customer Relationship Management

salesforce silver consulting partner heroku

Data Management & Integration

mongodb kafka Hortonworks Microsoft Azure

amazon web services SAP DELL Boomi Amazon Redshift

prestodb hadoop snapLogic MuleSoft

informatica TREASURE DATA cloudera

ORACLE EXASOL

ABOUT CERVELLO

Cervello Inc., is a leading professional services and solutions provider focused on helping companies solve complex data challenges, improve business analytics and optimize business performance. We focus on transformative cloud-based technologies in enterprise performance management, data management and business intelligence and customer relationship management. Cervello works with some of the leading on-premise and cloud software providers such as Oracle, Host Analytics, Salesforce.com and Birst. Our core services include advisory and consulting, solution implementation, custom application development, cloud integration and managed services. For more information, visit us at www.mycervello.com or contact us at info@mycervello.com.